

EWPA MEDIA RELEASE

13 September 2024

Engineered wood products creativity showcased in new EWPA mezzanine office.

Engineered Wood Products Association of Australasia (EWPA) new mezzanine office and board room was formally opened by EWPA Chair Stuart Toakley on Wednesday, 11 September 2024, enthusiastically attended by industry and supply chain representatives.

The new office is open and welcoming, showcasing the flexible use of a range of EWPA member company's renewable engineered wood products (EWPs), and offers staff a creative new space to work in and interact with industry. It demonstrates even an initially bland industrial unit can be made into a vibrant workplace with many modern conveniences.

EWPA Chair Stuart Toakley declared the new office was the 'cherry on top of the cake' of recent investments made by EWPA and reflected the association's leading role in providing timber technical expertise, product certification and testing throughout Australasia.

A previously mezzanine roof storage space has been transformed by the capable hands of well-known industry stalwart and retired EWPA employee, Andy McNaught. Though he may be retired, he's still very much committed to our industry and promoting EWP use. From start to finish, Andy has skilfully designed, managed trades, and built the new workspace. The EWPA team are deeply grateful to Andy's immense knowledge, his years of service, and the impressive quality and functionality of the new build.

As you enter EWPA's front door, you're greeted by a commanding laminated hardwood tabletop, skilfully manufactured by Australian Sustainable Hardwoods (ASH), followed by more ASH laminated stair treads, leading to the new mezzanine office landing. Here you are captivated by a modern aesthetically immaculate feature of Austral Plywood vertical strips, accentuated by a backing charcoal painted wall. The Australian Panels' particleboard STRUCTAflor may be easy to miss, as it's not been used as a flooring product, but makes up the external cladding of the panelised framing sections.

The unsung and unsighted heroes but are just as important are the now-clad products, AKD timber framing from the Caboolture sawmill, and Wesbeam e-joint. Two EWPs that do the job well and are a sensible and renewable choice for renovations and lightweight timber framing builds.

Where the new office space really comes together is the exquisite interior. Australian Panels Easycraft Easy VJ100 is a simple product, that truly adds extensive value to the room. The softened texture from the floor-to-ceiling profile leads perfectly into the charcoal feature wall. Austral Plywood ceilings, doors, and trimmings are ever present, as they both pop with a flash of colour and grain texture yet are subtle and warming.

EWPAAs CEO Gavin Matthew said “The new build reflects our commitment to innovative use of EWPs, our members, their products, and our renewable timber industry. The new workspace, created masterfully by Andy McNaught, is a welcoming environment which we’re proud of, and will show off every chance we get”.

[Photos of the build are attached]

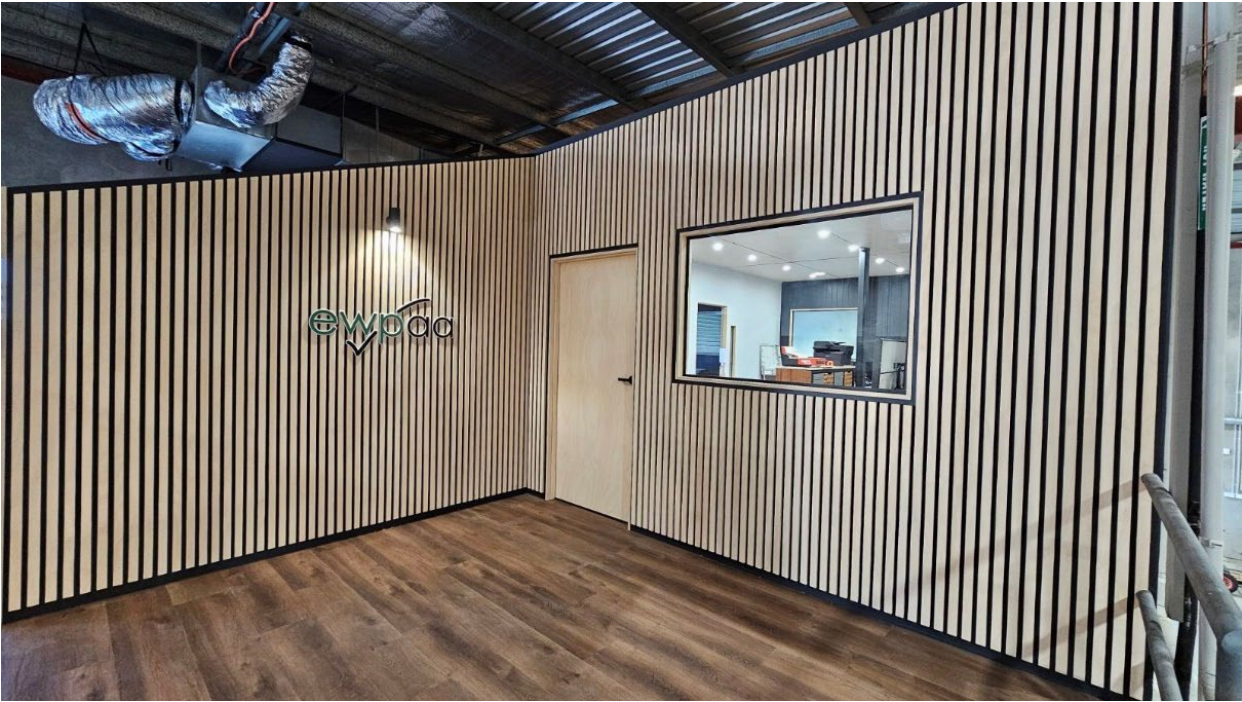
END

Gavin Matthew, EWPAAs CEO

Inquiries: **Gavin Matthew**, EWPAAs CEO. (b) (07) 3250 3700. (m) 0429 990 528

* **About EWPAAs**. Engineered Wood Products Association of Australasia (EWPAAs) is a member association for manufacturers of a broad range of engineered and solid wood products located throughout Australasia. <https://ewp.asn.au/>

EWPAAs new mezzanine office entrance.



EWPAAs new board table and guests at the grand opening on 11 September 2024.



EWPAAs CEO and Chair with the grand opening plaque.



EWPAAs new mezzanine office

