

## Engineered wood in the right environment for TDA awards

School design wins EWPAAs prize for Architectus

ENGINEERED wood products were on show at the 2016 Timber Design Awards at Luna Park in Sydney on September 15.

The 17th awards organised by the Timber Development Association showcased the use of timber and engineered wood products in designs ranging from community centres, commercial buildings and restaurants to houses and furniture.

The CEO of the Engineered Wood Products Association of Australasia Dave Gover commended the use of engineered wood products in many of the winning designs.

"We saw a whole range of products being used in the nominated and winning designs – from plywood and LVL, to glulam and CLT," Mr Gover said.

"The designs really highlighted the versatility of engineered wood products, which is one of the many benefits in choosing these products as a primary construction material," he said.

Mr Gover said it was evident that an increasing number of architects and specifiers were driving the specification and design of buildings using engineered wood products.

"It's fantastic to see that there is continuing growth in the



Dave Gover, CEO, Engineered Wood Products Association of Australasia (left), presents the EWPAAs Timber Panels Award to Colin Odbert and Ross Styles of Architectus for The Gipson Commons, St Michael's Grammar School, St Kilda, Melbourne, at the 2016 Australian Timber Design Awards in Sydney.

"These products have significant benefits to the environment and are fast becoming the preferred

choice for sustainable design and construction."

He said that due to a heightened awareness of climate change and carbon emissions, wood stood apart as a renewable construction material with a better-than-zero carbon footprint.

As the seventh most forested nation on earth, it made good sense, both economically and environmentally, for Australian buildings to be constructed from wood.

"The vast majority of Australian

**'These products have significant environmental benefits and are becoming the preferred choice for sustainable design and construction': Dave Gover**

use of timber and engineered wood products in the design and construction industries," he said.

choice for sustainable design and construction."

He said that due to a heightened

### Welcome

Welcome to the Spring edition of the EWPAAs Bulletin, a regular news and information service for architects, timber engineers, specifiers, students and builders.

Through this newsletter, the Engineered Wood Products Association of Australasia provides technical information, advice on Australian and New Zealand building codes and standards, updates on forest and forest product certification and building materials performance.

Inquiries or requests for further information on any of the reports in the EWPAAs Bulletin – or any advice required on EWPAAs/PAA certified plywood, LVL and wood panel products – can be directed to +61 7 3250 3700.

Email: [inbox@ewp.asn.au](mailto:inbox@ewp.asn.au)

Web: [www.ewp.asn.au](http://www.ewp.asn.au)

A list of EWPAAs members and their contacts appears on Page 8.





## IN THIS ISSUE

- EWPAА PRESENTS AT TDA AWARDS
- TROPHY RECOGNISES VALUED SERVICE
- EWPAА GOLD STANDARD JUMPS THE BAR
- CLAIR TO PROMOTE PRODUCT PERFORMANCE
- FCJA GAINS TRACTION
- PLYWOOD GREAT LEARNING 'CURVE'
- EWPAА TEAM ON CHINA MISSION
- ENGINEERED WOOD'S KEY ROLE IN TALL TIMBER

ewpaa  
bulletin

# Inaugural EWPAА trophy marks contribution to engineered wood



NOTED LVL-based building systems expert Bruce Hutchings was recognised for his outstanding contribution to the engineered wood products industry during a special ceremony at Frame Australia in May.

• **Pictured at the inaugural presentation of the perpetual trophy by the Engineered Wood Products Association of Australasia are Michael Murphy, president,**

**EWPAА; recipient Bruce Hutchings and his wife Anne; and Dave Gover, CEO, EWPAА.**

Mr Hutchings started Timberbuilt Solutions in 1982 with the idea of using timber to provide commercial and industrial scale structures.

When he started, this focus area was a "lonely field". The situation is not so different now, either,

and Bruce Hutchings remains an innovator.

Indeed, Timberbuilt Solutions is well known today for taking on projects not everyone can do and for being at the forefront of new technologies and materials.

For more than 30 years, Bruce and his team have been showing the industry what is possible in timber construction

## Plywood panels provide calm and warming environment for students

From P 1

forests carry independent sustainability certification; a testament to our forestry industry's commitment to sustainability," Mr Gover said.

"Occupants of timber buildings also report positively on their environment, finding them to be conducive to quieter, calmer and more productive living."

The EWPAА was the proud sponsor of the Timber Panels Award, which was won this year by Architectus Group for its design of The Gipson Commons at St Michael's Grammar School in St Kilda, Melbourne.

The award was accepted by Ross Styles and Colin Odbert, director and principal at the Sydney studio of Architectus, on behalf of their Melbourne office.



**EWPAА Wood Panels Award winner ... the Gipson Commons at St Michael's Grammar School in Melbourne.**

The Timber Design Awards judges noted that the Gipson Commons project used plywood wall paneling to promote a calm building environment for the school, through its warmth and sound attenuation.

In attendance at the Timber

Design Awards were architects, builders, designers and engineers, as well as delegates from various forestry and wood products organisations and industry bodies.

• **Plywood great learning curve,**

**Pages 5 and 6**

# EWPA 'gold' jumps highest bar in international standards

*WOOD testing and certification services provided by the Engineered Wood Products Association of Australasia are of the highest standard, CEO Dave Gover says.*

EWPA-certified products are tested under strict National Association of Testing Authorities (NATA) accreditation rules and manufacturing processes are audited under a Joint Accreditation System of Australia and New Zealand (JASANZ), an accredited product certification program that not all products can claim.

"The EWPA is proud to offer a Type 5 certification scheme, which is the most comprehensive in the industry," Mr Gover said.

"Type 5 certification is about more than just a test certificate; it requires auditing of the manufacturing process, ongoing sampling of product at the point of manufacture for testing, market surveillance and a review of a manufacturer's commitment to product quality."

EWPA-certified manufacturers of plywood, LVL, MDF, particleboard, and structural timber carry out audits constantly and their products are independently tested on a regular basis.



**EWPA laboratory manager Suzie Steiger monitors an Instron machine used for testing the bending strength and stiffness of plywood, particleboard and MDF samples at the Eagle Farm laboratory in Brisbane while new recruit Troy Edwards adjusts calculations on the machine.**

"These monitoring activities are ahead. The EWPA's 'gold' what make EWPA certification standard' for product certification

**'This level of certification ensures that EWPA certified products are safe, reliable and fit-for purpose': Dave Gover**

so robust," Mr Gover said.

"This level of certification ensures that EWPA certified products are safe, reliable and fit-for purpose. Engineered wood has a wealth of opportunities

supports this."

EWPA's Brisbane laboratory at Eagle Farm is accredited by NATA and tests EWPA certified products for a full range of structural and physical

properties and for formaldehyde emissions and bond quality. The association also operates a JAS-ANZ accredited chain-of-custody program for sustainably sourced timber.

"Through manufacturing innovation, robust quality control and conformance to Australasian product standards, the wood products industry is committed to providing a reliable, sustainable, and renewable material for building construction," Mr Gover said.

"Our priorities in developing and strengthening opportunities for timber include measures to ensure products used comply with Australian standards. The last thing anyone needs is shonky product in the market."

Mr Gover said structural safety and the health and wellbeing of building occupants must be the priority. The EWPA brand was a mark of confidence that a timber product met the requirements of Australasian standards.

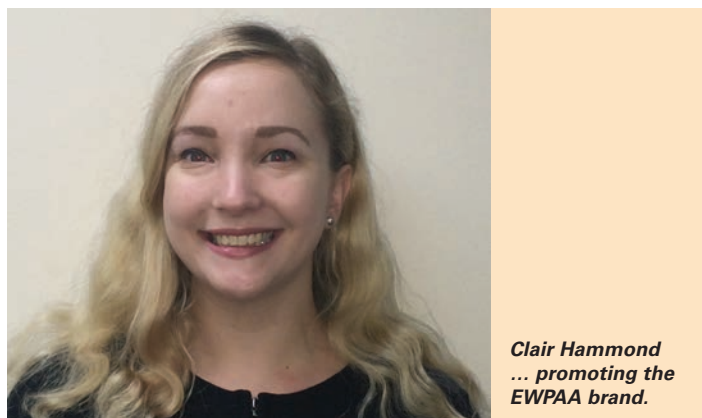
The EWPA and its members have been long-time advocates of product conformance and honest branding.

"Promotion of EWPA certification to the designer and construction community is fundamental in controlling this risk," Mr Gover said.

## Clair to promote EWPA product performance

*WIDE experience in communications and public relations supports the talents of Clair Hammond who has joined the team at the Engineered Wood Products Association of Australasia.*

Clair has been appointed Communications Officer and will promote the importance of fitness-for-purpose, product performance and sustainability that sit behind the EWPA's certification mark.



**Clair Hammond ... promoting the EWPA brand.**

She will also be coordinating events among EWPA members. Clair graduated from the

Queensland University of Technology with a Bachelor of Business (Public Relations). After graduation, she worked in publicity and communications for Charlton Brown, a community services agency and training organisation.

She moved to Canada in 2014 to live and work on the ski fields of Whistler, combining her passions for travel and the snow. Clair returned to Australia in May this year and is excited to be back in Brisbane and in a role applying her communications knowledge and skills with the EWPA.



# FCJA gains traction with 'Australian brand' image

AUSTRALIAN furniture and joinery makers and designers are collaborating to build a globally-recognised 'Aussie brand' image. The catalyst is the current apartment and renovations boom and rising interest in bespoke design.

The Furniture Cabinets Joinery Alliance (FCJA) has gained new traction since it was established in 2011, developing a strategic plan supported by multiple industry sectors and recognised by government.

FCJA represents a \$33 billion industry employing 130,000 people in the manufacture of furniture, in-built cabinets, kitchens, bathrooms, windows, doors and shop and office fittings.

Founding members are the Furnishings Industry Association of Australia, the Cabinet Manufacturers and Designers Association, the Australian Window Association, the Australian



FCJA chair Ron Scott (right) and policy adviser Peter Kreitals (centre) visited the Brisbane office and laboratory of the Engineered Wood Products Association of Australasia recently to update EWPA CEO Dave Gover on the alliance's progress as a strong self-advocacy group.

locally manufactured products, embrace design and innovation as a core characteristic for future growth, maximise share of the domestic market, adopt latest technological developments and attract more highly skilled, highly trained workers.

Ron Scott said through a single, united voice, the FCJA has fostered strong engagement with

"Collaboration across industries also simplifies the fit-out process for customers," he said.

"In this sector of the market there is a lot of activity in home renovation, but less of a desire by consumers to have multiple individual sub-trades to manage.

"To meet the needs of an intelligent market place, our suppliers are better placed to service the clients if they collaborate with others using the combined and different skills to better meet a holistic need."

Mr Scott said FCJA was also keen to contribute in a united way to standards and certification processes, drawing on the knowledge, experience and requirements of members.

## 'Collaboration across industries simplifies fit-out process' – Ron Scott

Shop and Office Fitting Industry Association, and the Australian Woodworking Industry Suppliers Association.

The strategic plan aims to ensure the future viability of

federal and state governments, sturdily advocating its principles through a round of meetings with federal ministers, parliamentary secretaries, ministerial advisers and government officials.

## EWPA board members confer in Brisbane



Ahsan Qureshi, quality assurance manager, Wesbeam, Perth, and Michael Murphy, EWPA president and market manager, Carter Holt Harvey-LVL.



Ross Maddock, Big River Group, Grafton, NSW, Dave Gover, CEO, EWPA, and Cameron Rodger, Carter Holt Harvey Woodproducts, Auckland, NZ.



Andrew Close, commercial manager, Carter Holt Harvey, and Stuart Toakley, sales and marketing manager, Borg Manufacturing, Somersby, NSW.



# Plywood great learning 'curve' for two educational projects

National awards for school buildings in Melbourne

*EXTENSIVE use of Australian certified plywood panelling and joinery in two major educational projects has contributed to wins this year in national and state awards by the Melbourne studio of Architectus.*

St Michael's Grammar School in St Kilda won the EWPA Wood Panels Award at the Australian Timber Design Awards in Sydney, and the Mandeville Centre in Toorak took out the 2016 Australian Institute of Architects (Vic) award for educational architecture.

John Sprunt, principal at Architectus in Melbourne, said plywood was used principally for all wall linings, ceiling and shelving in both projects.

"Authenticity of colours, a feeling of warmth and acoustic performance of plywoods provides a wonderful environment for student learning," Mr Sprunt said.

Architectus is a design studio that brings together the experience of more than 250 architects, interior and designers and urban planners

Judges of the Australian Timber Design Awards noted that the designers of the Gipson Commons at St Michael's Grammar School had used timber because of its beautiful finish and also because it performed a multitude of other purposes including external sun shading, acoustic attenuation internally and health benefits for occupants.

Plywood was also used for joinery in public spaces and for stair balustrades.

"The acoustic performance was achieved by using curved, perforated plywood panels and the use of plywood carried through to shelving, furniture and the ceiling in the cafeteria," Mr Sprunt said.

The Gipson Commons project used more than 1000 sq m of plywood for wall lining and more



**Plywoods provide a wonderful environment for student learning at St Michael's Grammar School.**

than 400 sq m of baffle ceiling. Joinery included 220 lineal metres of 450 deep shelving, up to 2 m high.

Externally, Architectus used structural plywood and laminated cypress beams.

This project is a fresh

of quality informal and formal teaching spaces designed to reveal work in progress in a way that invites shared endeavour.

Using innovative 3D planning, the design provides a sensitive and supportive spatial hierarchy for the entire school in a tight three-

of the wider community at work and play.

Rising over three levels, the Gipson Commons is a fusion of knowledge and archival display, science, food technology, school café, recreation and performance space, quiet study areas, collaboration space, structured learning space, and, above all, a place where the whole school community can meet.

In designing the Gipson Commons, Architectus created a building for the 21st century learning needs of students from kindergarten to Year 12, which provides an opportunity for the community to come together.

Over three impressive levels, The Mandeville Centre in Toorak is home to open technology learning spaces, lecture and meeting zones, staff work areas, dedicated year 12 breakout space, an outdoor courtyard and an advanced learning library.

The design encourages vertical connectivity between each learning space, using internal voids and external double height glazing to evoke unity.

The Mandeville Centre is a focal point for the school community, in function and location, acting

## Authenticity of colours, a feeling of warmth and acoustic performance of plywoods provides a wonderful environment for student learning

architectural resolution of the need for a variety of shared learning spaces within a larger coherent whole. It presents a blended array

storey complex, a high level of natural and artificial lighting, and external connection through views that preserve sweeping vistas



**More than 400 sq m of plywood was used in the baffle ceiling above the cafeteria at The Gipson Commons.**

Cont P 6



# A building for 21st century learning needs of students from kindergarten to Year 12

From P 5

as a link to all school operations. The building houses school administration and centres for staff, lecture theatre, learning resource and Year 12 students.

The atrium continues the existing courtyard language of the campus, further promoting a pedagogy in which learning environments are blended inside and out. Informal learning spaces are interwoven throughout the light-filled indoor environment, encouraging interaction between students and teaching staff. The Year 12 centre has its place at the upper level – aspirational in terms of the hierarchy of a school and yet connected visually and physically.

The architecture draws on the library building typology in terms of promoting the quality of light and space.



**The award-winning Mandeville Centre is a focal point for the school community, in function and location, acting as a link to all school operations. Plywood panelling and joinery feature throughout the school.**

## EWPA team on China mission

*THE Engineered Wood Products Association of Australasia has joined an industry tour of plywood mills in China, scheduled for late October.*

CEO Dave Gover and Scott Matthews, joint chief executive of EWPA member company Austral Plywoods in Brisbane, will have an opportunity to inspect a two major clusters of plywood mills using a range of hardwoods and softwoods from both domestic and imported logs.

The tour will take in an inspection of a modern and well-managed MDF mill, which has both Dieffenbacher and Siempelkamp MDF presses. Tour participants will also visit two log export ports, including the huge Lanshan port, the world's largest radiata pine import port, which has just commissioned a massive 'on port' methyl bromide fumigation facility, the most high-tech in the world.

Tour organiser and guide is well-

known RISI China-based forestry specialist Gavin Hao, who spoke at the recent DANA/FWPA conference in Melbourne.

"Just by chance, a number of possible new wood processing initiatives may be developing in New Zealand and/or Australia, at least two of which are directly linked to tour visits," tour organiser Dennis Neilson of DANA (NZ) Ltd said.

Scott Matthews reports two exciting projects for Austral Plywoods make extensive use of the company's new A-Bond, Super EO Ariply, a factory-finished plywood feature panel manufactured from

high quality exterior hoop pine plywood using a three-coat system.

About 800 sheets, or 2000 sq m of Airaply, will be used for the ceilings in the \$500 million development of the Grand Central retail complex in Toowoomba on the Darling Downs.

Airaply has also been chosen for the ceilings in horse stables and the arena at the Willinga Park Equestrian Centre in Forest Drive, Bawley Point on the NSW south coast. A feature of this project is the use of Austral's newly-developed Shadowfix which connects plywood sheets in a tongue-and-groove configuration for a clean "fixing-free" appearance.



**Scott Matthews (right) shows John Stafford, technical officer at the University of Queensland's architecture workshop, the production facilities at Austral Plywoods. Austral supplied structural plywood sheets for a relocatable flat-pack building design project by QU second-year architectural students.**

# Engineered wood to play key role in tall timber construction project

UQ centre transforming Queensland's timber industry

*PLYWOOD and LVL construction systems will play a major role in a the construction of tall timber building project planned as part of the Centre for Future Timber Structures at the University of Queensland.*

The centre, which was officially opened July, is developing products using techniques from the aerospace industry to greatly improve the strength of engineered wood products and work is under way on the use of robotic construction to dramatically increase construction speed, reduce weight and cut waste on site.

The state government's \$1 million in funding has been matched by the University of Queensland. Private sector partners include Hyne Timber, global engineering firm Arup Engineering and major building company Lendlease.

The Australian Research Council is providing an additional \$1.5 million to the project to get a tall timber structure under way in Brisbane or possibility on a site at the university.

"Increased acceptance of timber construction in medium to high-rise structures would be a major boon to Queensland's forest industries and that's why this project is attracting so much interest and good will," state



**Examining a digitally fabricated, self-stabilising wood structure at the Centre for Future Wood Structures ...**  
**Dilum Fernando, lecturer in Civil Engineering at UQ, Kim Baber, architect and lecturer at the UQ School of Architecture, Joe Gattas, lecturer in civil engineering, Dr Alastair Woodard of TPC Solutions, Melbourne, and Geoff Stringer, Hyne Timber.**

Minister for Forestry Leanne Donaldson said at the opening.

"The centre's mission is to engineer new timber building products, deliver tall timber buildings and transform Queensland's timber industry in the process," she said.

## Aerospace technology lifts wood to higher level

"Many Queenslanders live in timber buildings, but timber is sparingly used in high-rise constructions and this

exciting collaboration is out to change that."

The centre will focus on engineering solutions that address the current barriers to the use of structural timber in tall buildings.

UQ's research effort includes developing concepts for timber skyscrapers; characterising the fire dynamics associated with timber structures; assessing the fire performance of novel timber composite products; and characterising the structural response of timber in fire conditions.

Leanne Donaldson said wood was an ideal construction material, with significant environmental

and economic advantages over concrete and steel.

The team assembled at the centre includes product manufacturers, fire safety engineers and structural engineers who will work together to ensure Queensland leads the world in the increasingly competitive tall timber engineering market.

Researchers are already working closely with Queensland Fire and Emergency Service to ensure the inherent fire safety of timber products and construction.

The forest products innovation team at the DAF Salisbury research facility has been instrumental in establishing the centre of excellence and will work closely with scientists from UQ and elsewhere.

Centre director Professor Jose Torero said the new centre would research ways to use timber to meet the challenges of sustainable construction.

"The centre houses a new Australian Research Council-funded industrial transformation hub with a mission to engineer new timber building products," Prof. Torero said.

"The semi-commercial-scale processing and prototyping capacity at the Salisbury Research Facility is a key asset for the hub, which will help to accelerate research findings into solutions for industry.

## EWPAAs meets the X-Factor

*TALKING new engineered wood products and product certification on the EWPAAs stand at AWISA 2016 in Melbourne are CEO Dave Gover (left) and Robin Jack, director of Xlam in Auckland.*

Xlam has entered into an arrangement with Hyne Timber to build Australia's first cross-laminated timber manufacturing plant at Wodonga on the NSW-Victoria border, representing a \$25 million investment.

The high-tech sustainable timber facility will produce 60,000 cub m of CLT a year, enough to



construct the equivalent of one Forte Melbourne – Australia's greenest apartment building – every week.

Xlam has been manufacturing the innovative and versatile building material in New Zealand for five years and shipping it to Australia, in competition with European importers.



# EWPA Members

## AUSTRALIA

### Alpine MDF Industries Pty Ltd

PO Box 804  
WANGARATTA VIC 3676  
Ph: (03) 5723 0411  
Fax: (03) 5721 3568  
Email: [graeme.williams@alpinemdf.com.au](mailto:graeme.williams@alpinemdf.com.au)

### Big River Group (Ausply)

PO Box 205  
FOREST HILL NSW 2651  
Ph: (02) 6926 7300  
Fax: (02) 6922 7824  
Email: [ausplysales@bigrivergroup.com.au](mailto:ausplysales@bigrivergroup.com.au)

### Austral Plywoods Pty Ltd

PO Box 83  
BRISBANE MARKETS QLD 4106  
Ph: (07) 3426 8600  
Fax: (07) 3848 0646 (Admin)  
Email: [info@australply.com.au](mailto:info@australply.com.au)

### Big River Group Pty Ltd

PO Box 281  
GRAFTON NSW 2460  
Ph: (02) 6644 0900  
Fax: (02) 6643 3328  
Email: [jbindon@bigrivergroup.com.au](mailto:jbindon@bigrivergroup.com.au)

### Borg Panels

Lowes Mount Road  
OBERON NSW 2720  
Ph: (02) 6336 0466  
Email: [aaron.evans@woodchem.com.au](mailto:aaron.evans@woodchem.com.au)

### CHH Woodproducts Australia

PO Box 299  
MYRTLEFORD VIC 3737  
Ph: (03) 9258 7652  
Email: [michael.baldwin@chhwoodproducts.com.au](mailto:michael.baldwin@chhwoodproducts.com.au)

### CHH Woodproducts Australia

PO Box 645  
MOUNT GAMBIER SA 5290  
Ph: (08) 8721 6365  
Fax: (08) 8739 7098  
Email: [al.scheidl@chhwoodproducts.com.au](mailto:al.scheidl@chhwoodproducts.com.au)

### D & R Henderson Pty Limited

PO Box 6307  
WETHERILL PARK DC NSW 1851  
Ph: (03) 4700 6438  
Fax: (03) 4700 6466  
Email: [jtonks@DRHenderson.com.au](mailto:jtonks@DRHenderson.com.au)

### The Laminex Group

90-94 Tram Road  
DONCASTER VIC 3108  
Ph: (03) 9848 4811  
Fax: (03) 9848 8158

Email: [Andrew.graham@laminex.com.au](mailto:Andrew.graham@laminex.com.au)

### Ta Ann Tasmania Pty Ltd

150 Davey Street  
HOBART TAS 7000  
Ph: (03) 6227 5500  
Fax: (03) 6227 5599  
Email: [robert.yong@taanntas.com](mailto:robert.yong@taanntas.com)

### Weatherex Pty Ltd

PO Box 21  
RAYMOND TERRACE NSW 2324  
Ph: 1800 040 080  
Fax: 1800 647 926  
Email: [sales@weatherex.com.au](mailto:sales@weatherex.com.au)

### Wesbeam Pty Ltd

PO Box 217  
WANNEROO WA 6065  
Ph: (08) 9306 0408  
Fax: (08) 9306 0444  
Email: [james.malone@wesbeam.com](mailto:james.malone@wesbeam.com)

## NEW ZEALAND

### CHH Woodproducts New Zealand Plywood

Private Bag  
TOKOROA  
NEW ZEALAND  
Ph: +64 7 885 0800  
Fax: +64 7 886 0068  
Email: [ian.potter@chhwoodproducts.co.nz](mailto:ian.potter@chhwoodproducts.co.nz)

### CHH Woodproducts New Zealand

Futurebuild Marsden Point  
Private Bag 9031  
WHANGAREI  
NEW ZEALAND  
Ph: +64 9 432 8817  
Fax: +64 9 432 8830  
Email: [grant.mckinlay@chhwoodproducts.co.nz](mailto:grant.mckinlay@chhwoodproducts.co.nz)

### IPL (West Coast) Ltd

PO Box 179  
GREYMOUTH  
NEW ZEALAND  
Ph: +64 3 762 6759  
Fax: +64 3 762 6789  
email: [tuffply@xtra.co.nz](mailto:tuffply@xtra.co.nz)

### Juken New Zealand Ltd (veneer plant)

PO Box 175  
KAITAIA NEW ZEALAND  
Ph: +64 9 408 9090  
Fax: +64 9 408 9123  
Email: [campbell.crooks@triboard.co.nz](mailto:campbell.crooks@triboard.co.nz)

### Juken New Zealand Ltd

### (Wairarapa mill)

PO Box 535  
MASTERTON NEW ZEALAND  
Ph: +64 6 370 0650  
Fax: +64 6 370 0653  
Email: [paul.jordan@jnl.co.nz](mailto:paul.jordan@jnl.co.nz)

### Juken New Zealand Ltd (Gisborne mill)

PO Box 1239  
GISBORNE NEW ZEALAND  
Ph: +64 6 869 1100  
Email: [bjsmith@jnleast.co.nz](mailto:bjsmith@jnleast.co.nz)

### Nelson Pine Industries Ltd

PO Box 3049  
RICHMOND  
NEW ZEALAND  
Ph: +64 3 543 8800  
Fax: +64 3 543 8891  
Email: [Richard.barry@nelsonpine.co.nz](mailto:Richard.barry@nelsonpine.co.nz)

## PAPUA NEW GUINEA

### PNG Forest Products Ltd (mill and office)

PO Box 88  
BULOLO 423  
PAPUA NEW GUINEA  
Ph: +67 5 474 5374  
Fax: +67 5 474 5365  
Email: [pngfp.amh@global.net.pg](mailto:pngfp.amh@global.net.pg)

### PNG Forest Products Ltd (sales office)

Ph: +67 5 472 2323  
Fax: +67 5 472 6017  
Email: [gsmith@pngfp.com](mailto:gsmith@pngfp.com)

### Rimbunan Hijau (PNG Group)

PO Box 102  
PORT MORESBY NCD  
PAPUA NEW GUINEA  
Ph: +67 5 325 7677  
Fax: +67 5 325 7654  
Email: [muknb@rhpng.com.pg](mailto:muknb@rhpng.com.pg)

## FIJI

### Fiji Forest Industries

PO Box 69  
LABASA  
REPUBLIC OF FIJI  
Ph: +67 9 881 1088  
Fax: +67 9 881 3088  
Email: [ffimalau@connect.com.fj](mailto:ffimalau@connect.com.fj)

### Valebasoga Tropikboards Ltd

PO Box 528  
NASEA SUBDIVISION  
LABASA FIJI ISLANDS  
Ph: +67 9 881 1386  
Fax: +67 9 881 3848  
Email: [vtbl@connect.com.fj](mailto:vtbl@connect.com.fj)

